

# Shock Wave Therapy Device

OCE-ESWT-003  
Type II

EDX

Shenzhen Oceanus Medical Device Co.,Ltd.



## Clinical Guidance Manual

## Medical Disclaimer

The information in the Clinical Guidance Manual is not intended or implied to be a substitute for professional medical advice, diagnosis or treatment. All content, including text, graphics, images and information, contained on or referenced in the Clinical Guidance Manual is for general information purposes only. You are encouraged to confirm any information obtained from or through the Clinical Guidance Manual with other sources, and review all information regarding any medical condition or treatment with your physician.

NEVER DISREGARD PROFESSIONAL MEDICAL ADVICE OR DELAY SEEKING MEDICAL TREATMENT BECAUSE OF SOMETHING YOU HAVE READ ON OR ACCESSED THROUGH THIS USER MANUAL.

*Shockwave For Every Body.*



Oceanus Products does not recommend, endorse or make any representation about the efficacy, appropriateness or suitability of any specific tests, products, procedures, treatments, services, opinions, health care providers or other information that may be contained on or referenced through this Clinical Guidance Manual .

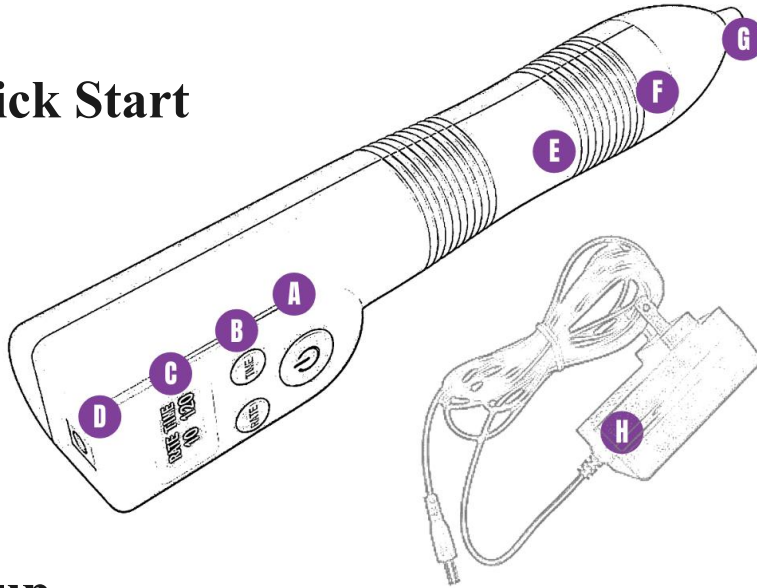
OCEANUS PRODUCTS IS NOT RESPONSIBLE NOR LIABLE FOR ANY ADVICE, COURSE OF TREATMENT, DIAGNOSIS OR YOUR PERSONAL MEDICAL INFORMATION.

© 2021 Oceanus Products, llc. All Rights Reserved

[Email]:[info@oceanuswave.com](mailto:info@oceanuswave.com)

[Web]:[www.oceanuswave.com](http://www.oceanuswave.com)

## Quick Start



- 【A】 Power
- 【B】 Settings
- 【C】 Display
- 【D】 Power Jack
- 【E】 Handle
- 【F】 Fixation Cone
- 【G】 Transmitter
- 【H】 Power Cord

## Setup

1. Place the Shock wave therapy device on a flat, level surface.
2. Insert the Cord (H) into the Power Jack. (D).
3. Plug the power cord into the wall outlet.

## Using The Device

1. Press the **F** button to adjust the frequency.
2. Press the **T** button to adjust the use time.
3. Press the **▶||** button to start EDX therapy.

## Controls & Settings

**Options:**

- L** 10 Hz
- M** 15 Hz
- H** 20 Hz

**Options:**

- 1 Min
- ....
- 5 Min

**Options:**

1. Press the **F** button to adjust the frequency [speed] to Low, Medium, or High.
2. Press the **T** button to adjust the use time from 1:00 min. to 5:00 min.
3. Press the **▶||** button to Start or Stop the device from delivering waves.

**Legend:**

- 【A】** Frequency Button
- 【B】** Frequency Display
- 【C】** Time Button
- 【D】** Time Display
- 【E】** Start / Stop Button

**Warning:** ⚠ *The device must be connected to power to operate.*



## Introduction

Oceanus Shock Wave Therapy Device (EDX) is a compact, user-friendly, in-home use shockwave therapy solution for men's sexual performance. Treatments are tailored to individual needs and adjustable to the frequency and time of treatment. Shockwaves stimulate cellular growth, increase blood flow and promote healthy tissue regeneration. It provides an effective, non-invasive alternative designed for elective self-administration to relieve symptoms of erectile dysfunction (ED).



### Indications:

Erectile Tissues | Penile Scar Tissue | Pelvic Pain





## **Contraindications:**

- Local infections in the treatment area.
- Around malignant or benign tumours.
- Directly on cartilage surfaces or near the small facet joints of the spinal column.
- Directly over implanted electronic devices such as pacemakers, analgesic pumps, etc.
- Directly over implanted cosmetic implants, including an inflatable prosthesis.
- In areas, in which mechanical energy in the form of vibrations may lead to tissue damage such as metal implants after a fracture.

## **Precautions:**

- If blood clotting disorders are present or the patient is receiving treatment that results in a change in the blood clotting behaviour
- Do not use on pregnant women or children.
- On patients with neurological diseases resulting in impairment of the vasomotor function in the treatment area
- Over air-filled cavities such as treatment on the thoracic spine, etc.
- Treatments with the device may cause temporary irritation, petechial, bruising, or swelling.

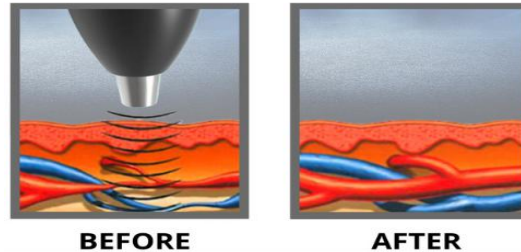


## Features

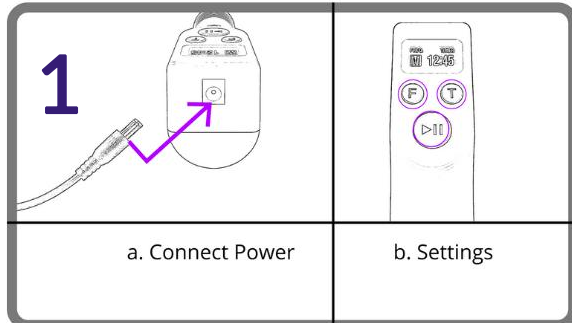
The handpiece contains a projectile that is accelerated through the electromagnetic transfer of kinetic energy. This kinetic energy is transferred into impact energy in the applicator head. The impact energy delivered from the applicator head results in radial pulses developed in the target tissue.

## Key Benefits

- Induces Vasodilation and Angiogenesis to Combat ED Symptoms
- Stimulates and enhances nerve sensation
- Reduces pain and inflammation on the spot
- LI-ESWT may also improve the effectiveness of pde5 inhibitors, which are oral drugs to treat ED.

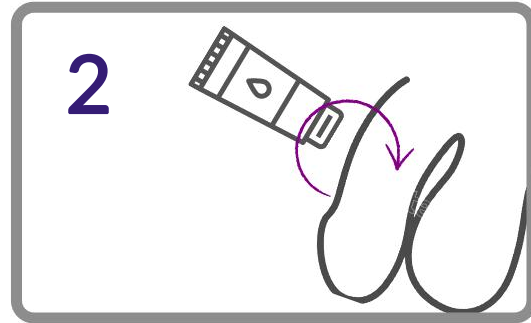


# General Treatment Process



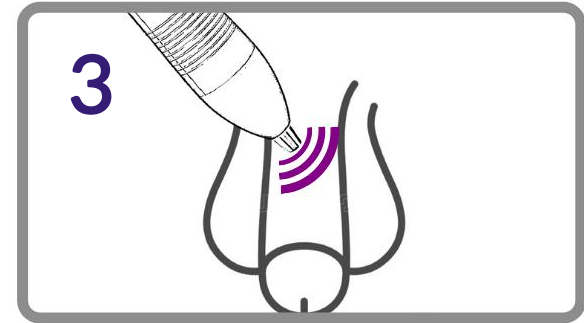
## EDX Device Setup

- Set frequency (speed)
- Set Time
- Set Aside [on a flat surface]



## Treatment Prep

- Review treatment instructions.
- Apply ultrasound gel to the treatment area.
- Tip: If slippery, use a paper towel to hold self with.*



## EDX Treatment

- Place the EDX transmitter tip on the treatment site.
- Press the start button and follow treatment guide.

# Erectile Dysfunction

EDX shockwave therapy is a form of physical therapy that uses acoustic sound waves to stimulate healing.

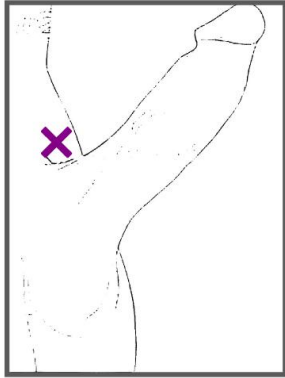
Various clinical studies on erectile dysfunction demonstrated a significant improvement in perfusion and the formation of new vessels which is crucial for a high level of patient acceptance and a successful application.

## Number and Frequency of Treatments

Shockwave therapy is FDA-approved, non-invasive, and can be used up to three times per week with a 24-hour rest period in between. After completing 6 treatment sessions, take a 30-day break from shockwave therapy. Repeat this step as needed until you get the desired results.

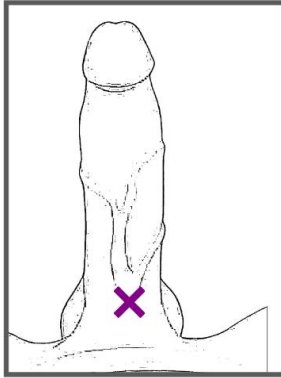
EDX Settings	Values
Frequency	L or M
Time	1 to 5
Sessions Per Round	5 to 6





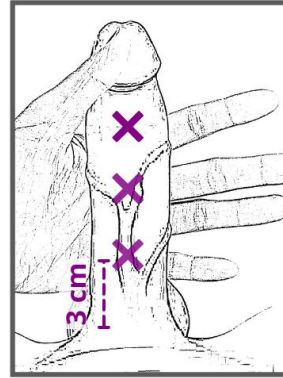
### STEP 1:

Starting at the base, place the EDX transmitter on the top side of the penis.



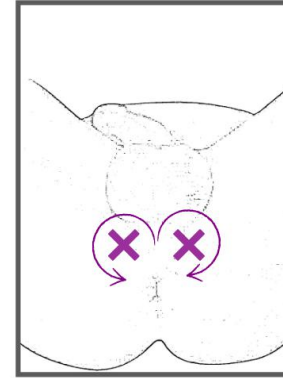
### STEP 2:

Slowly wave EDX left and right for the appropriate time while keeping the treatment tip on top of the penis.



### STEP 3:

Repeat STEP 2 at each treatment site without pausing therapy, traveling about 3 cm from the base to tip (as pictured).



### STEP 4:

To treat extra erectile structures, place an EDX transmitter on the center-left and center-right of the perineum (as pictured).

- Prepare for treatment as directed (See GENERAL TREATMENT PROCESS) before starting.
- Deliver waves for a duration of 1 to 2 minutes at each treatment site.
- If treatment is uncomfortable, add more transmission gel and/or increase frequency.

# Peyronie's Disease

**EDX shockwave therapy is a form of physical therapy that uses acoustic sound waves to restore tissue elasticity and stimulate healing.**

**A thicker fibrous plaque causes Peyronie's disease, which causes pain, penile curvature, and erectile dysfunction.**

## Number and Frequency of Treatments

Shockwave therapy is FDA-approved, non-invasive, and can be used up to three times per week with a 24-hour rest period in between. Repeat this step as needed until you get the desired results.

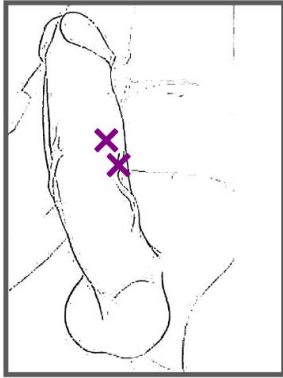
Settings	Values
Frequency	L or M
Time	1 to 5
Sessions	9 to 18

Home Care (Recommended) Full thickness heating technology (Hyperthermia device) is focused on scar tissue on a daily basis (or external tissue warming: ie; hot towel) .

Traction techniques are manually applied for disrupting fibrotic adhesion.

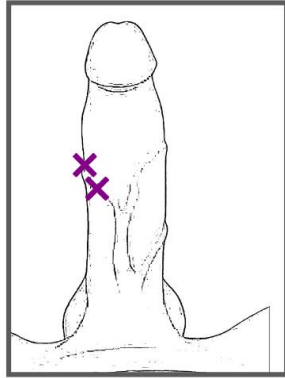
Encourage fresh oxygenated blood flow delivery to affected tissue daily.

**9 EDX  
TREATMENTS  
30 DAY  
RESULTS**



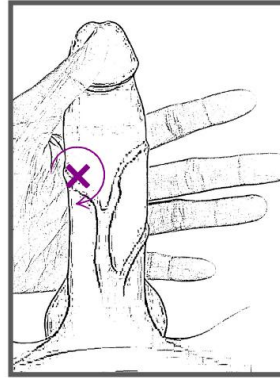
**STEP 1:**

**Locate (mark with surgical pen: optional) and secure mass with fingers prior to starting treatment.**



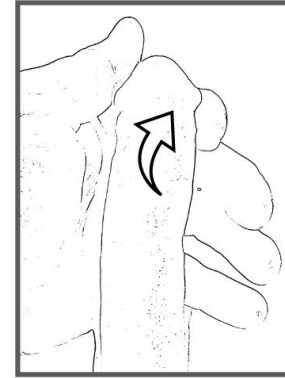
**STEP 2:**

Deliver 1000 waves focally directly over fibrotic mass or chord.



**STEP 3:**

Deliver additional 1000 waves locally around fibrotic mass or chord



**STEP 4:**

Employ manual manipulation or traction therapy following EDX use.

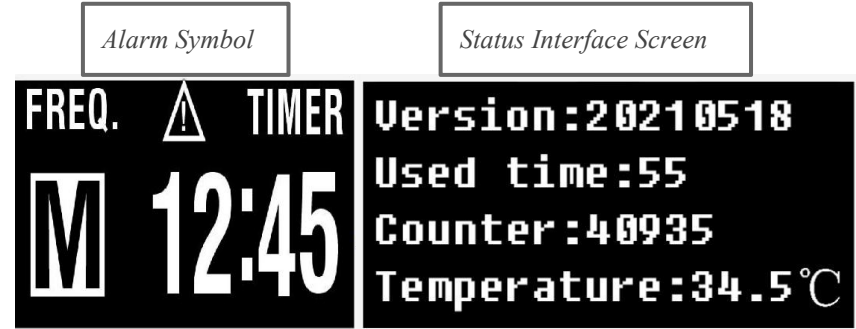
Apply gel locally over fibrotic tissue liberally prior to delivering energy.

## Troubleshooting

In the unlikely event of a malfunction, please follow these steps:

- 01 | DO NOT attempt to open or repair the device yourself.
- 02 | There are no user-serviceable parts.
- 03 | To turn power OFF, unplug EDX from the wall outlet.
- 04 | Allow the device to cool off for 10 minutes.
- 05 | If the problem persists, contact Customer Support.

Modification of this device is **not permitted**. Service and replacement of components may only be performed by certified service technicians by calling customer support.



**Overheating:** When the temperature of the motherboard reaches 76°C, the display will show an alarm symbol and the device will automatically enter a self cooling period. When the temperature of the motherboard drops to 60°C, the alarm sign disappears and the device resumes work.

Press the frequency button (F) and time button (T) at the same time to enter the status interface

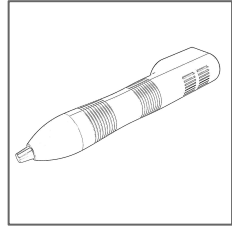
## Cleaning:

- Before cleaning EDX, the device must be switched off and the main power cord unplugged.
- Recommended cleaning agent is rubbing alcohol.
- Make sure that no liquids penetrate the device.
- Do not use sprays or corrosive substances.
- Protective gloves are recommended when cleaning.
- Allow EDX to air dry for 10 minutes before continue use or storage.

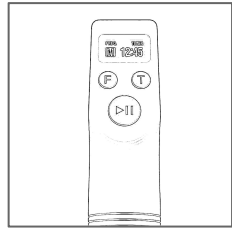
## Storage:

- Do not store this device in high temperatures or near open flames.
- Do not leave this device in direct sunlight for long periods of time.
- Storage recommended in original container in a dry, well ventilated location.

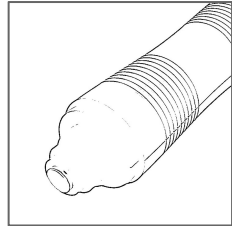
**01** | Wipe any ultrasound gel from the EDX transmitter tip and handle.



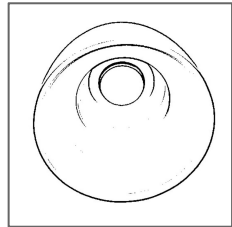
**02** | Wipe the EDX controls gently to avoid damaging the buttons and screen.



**03** | Unscrew the EDX fixation cone and remove from EDX unit. Wipe clean.



**04** | Wipe clean the inside of the fixation cone.





## Safety Precautions

**Do not** put any foreign objects into the device.

**Do not** allow this device to come into contact with water or any other liquid.

**Do not** attempt to open, modify or repair this device. There are no user-serviceable parts.

**Do not** use this device for anything other than its intended purpose.

**Do not** use this device if the power cable appears damaged. Contact Customer Support for replacement.

**Do not** pull out the power cable by holding the wire. Always grasp the plug when disconnecting this device.

**Do not** use any power cables that were not with the original device.

**Do not** use this device if you are under the influence of drugs or alcohol, or if you are not feeling well.

**Do not** use this device when you are wet.

**Do not** sit on or drop the device.

**Do not** use this device in damp areas. Avoid fire and water.



## Customer Support

EDX branded items purchased from Flūent Products include a 1-year limited replacement warranty.

If you have any questions not covered in this guide, please contact our Customer Service department at:



**+86 13824204367**



***info@oceanuswave.com***

***www.oceanuswave.com***



# References:

Chitale S, Morsey M., Swift L, et al. BMJ Int 2010

Goldberg D, Andriessen A, Gold M. Radial shockwave therapy for male erectile rejuvenation in a dermatology and/or medical aesthetic practice. J Cosmet Dermatol. 2019;18(6):1596-1600. doi:10.1111/jocd.13022

Hatzichristou DG, Kalyvianakis DE. EAU, 2015 abstract 124

Kitrey ND, Gruenwald I, Appel B, et al. J Urol 2016.

Poilakis V, Skriapas K, de Vried R, et al. Asian J Androl 2006.

Zimmermann R, Cumpanas A, McLea F, et al. Eur Urol 2009.

Srini VS, Reddy RK, Schultz T, et al. Can J Urol 2015.

Vardi Y, Appel B, Kirchevsky A, et al. J Urol 2012.